



AC9000 Series

BARN DOOR HARDWARE

OPTIONS



Model: AC9000-A

Description: Top Mounted Trolley

Finish: Stainless Steel



Model: AC9000-B

Description: Face Mounted Trolley

Finish: Stainless Steel



Model: AC9000-C

Description: Face Mounted Trolley

Finish: Stainless Steel

CONCEALED FLOOR GUIDES *(included with AC9000)*



Model: AC120SS

Description: Floor Mounted

Finish: Stainless Steel

OPTIONAL PULLS *(not part of AC9000)*

See Catalog for options at www.archconceptsllc.com



Model: AC5310

Description: 10" BTB or Single Sided

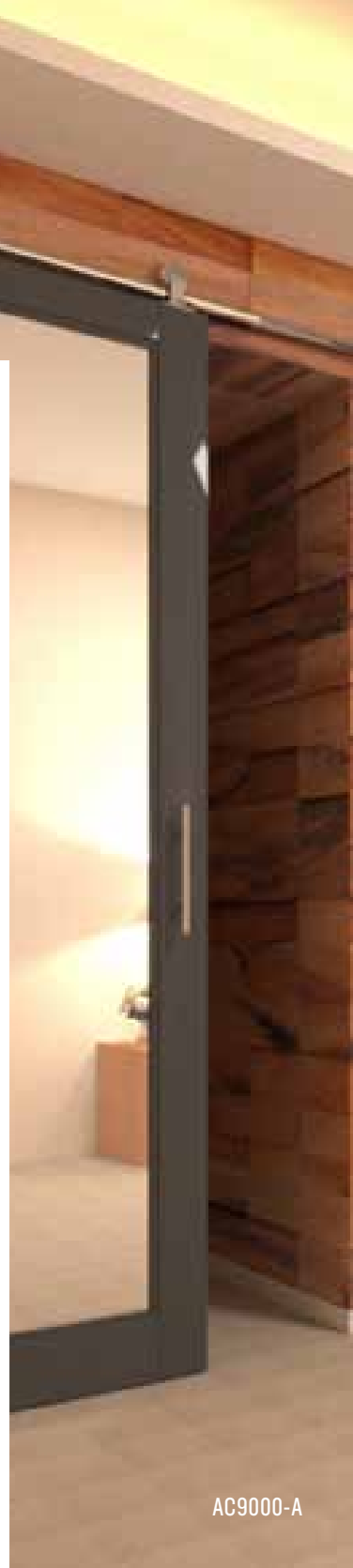
Finish: Satin Chrome



Model: AC4251

Description: 6" Recessed Flush Pull

Finish: Satin Chrome



AC9000-A

Architectural Concepts

(888) 248 2724

(720) 259 5358

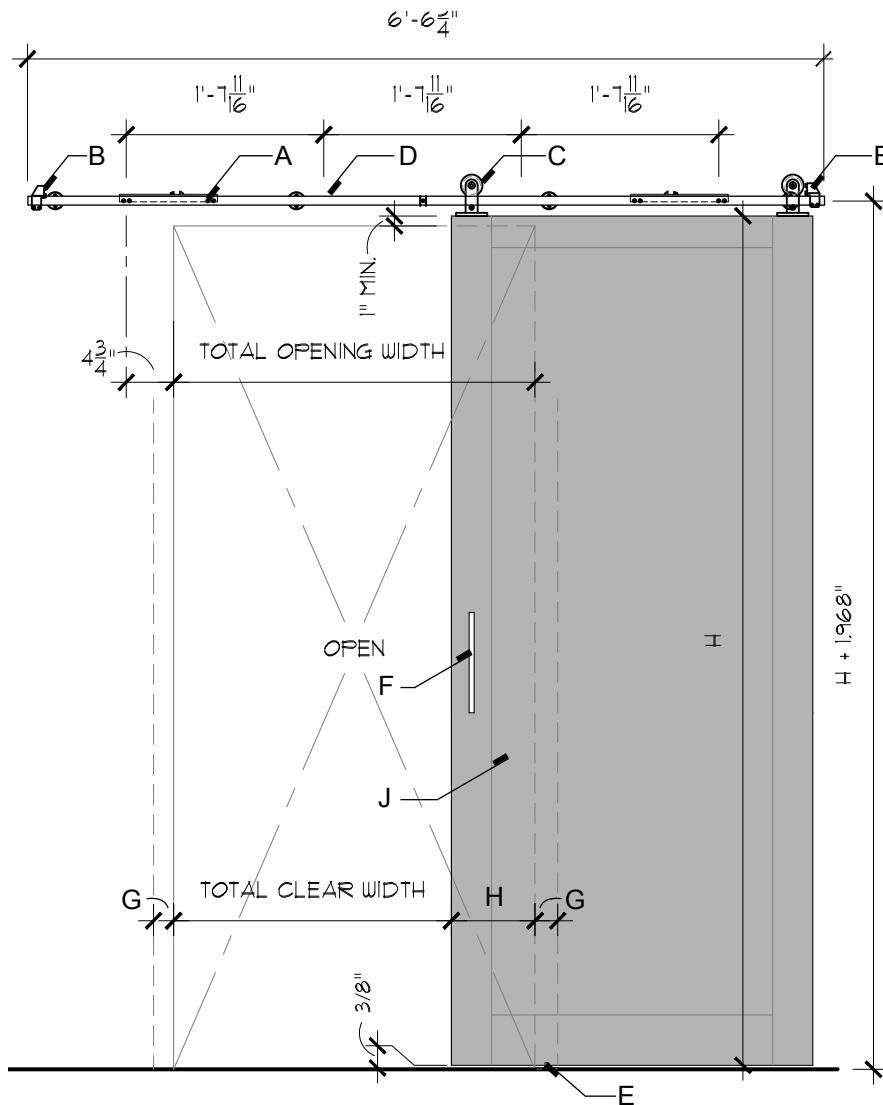
info@archconceptsllc.com

18505 Longs Way
Parker, CO 80134

archconceptsllc.com

AC9000A

BARN DOOR



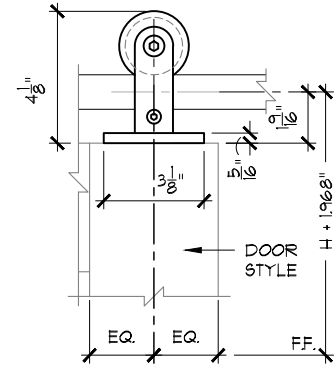
KEYNOTES:

- A. Stainless steel track
- B. Door stop
- C. Trolley hardware
- D. Track mount hardware
- E. Floor guide
- F. Pull handle
- G. 2" side of door overlap at closed position
- H. 4" side of door overlap at open position
- I. Shim
- J. Wood door

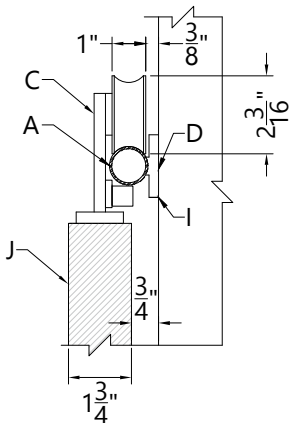
NOTES:

1. All measurements must be field verified by Architectural Concepts or by G.C.
2. Please follow care and handling instructions for doors and hardware.
3. AC will submit drawings for approval before ordering any material.
4. Layout and configuration can be customized to customer's need.
5. Shims are included in hardware package. Use as needed for spacing.

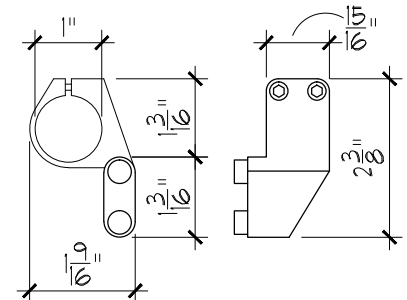
ELEVATION



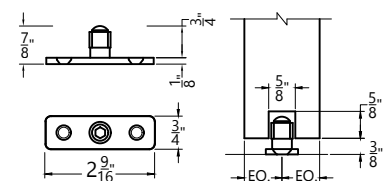
HANGER



DOOR STOP



FLOOR MOUNT



Architectural Concepts

(888) 248 2724 | (720) 259 5364 | info@archconceptsllc.com | 18505 Longs Way, Parker, CO 80134 | archconceptsllc.com

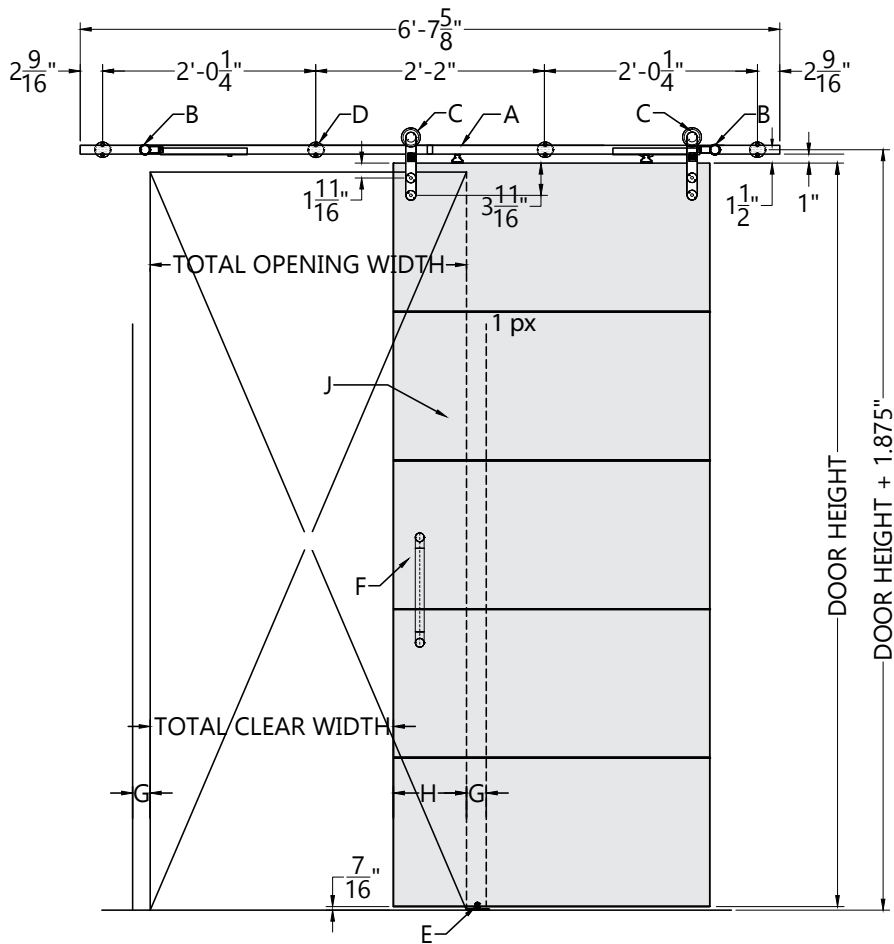
<https://www.archconceptsllc.com/products/doors/hardware/sliding-barn-door/>

Page 2 of 5

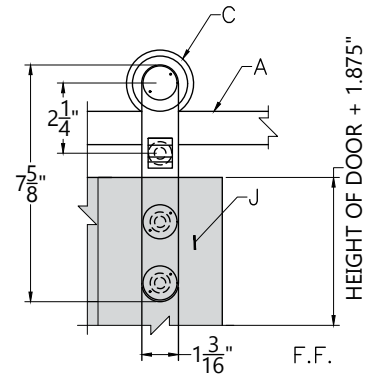
Revised 06-10-22

AC9000B

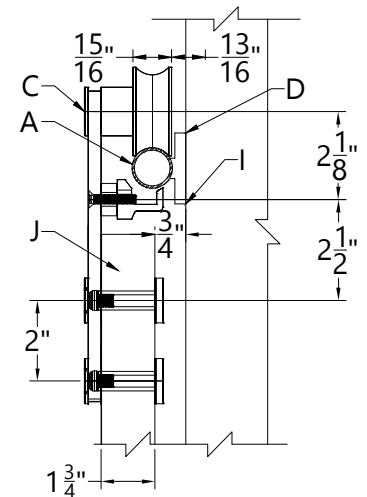
BARN DOOR



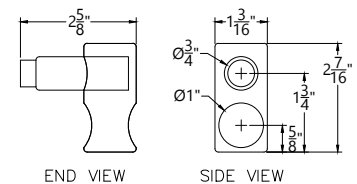
ELEVATION



HANGER



DOOR STOP



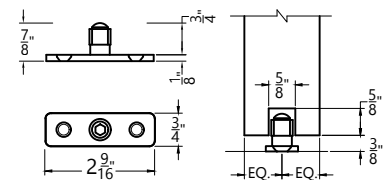
KEYNOTES:

- A. Stainless steel track with integrated soft close mechanism
- B. Door stop
- C. Trolley hardware
- D. Track mount hardware
- E. Floor guide
- F. Pull handle
- G. 2" side of door overlap at close position
- H. 4" side of door overlap at open position
- I. Shim
- J. Wood door

NOTES:

1. All measurements must be field verified by Architectural Concepts or by G.C.
2. Please follow care and handling instructions for doors and hardware.
3. AC will submit drawings for approval before ordering any material.
4. Layout and configuration can be customized to customer's need.
5. Shims are included in hardware package. Use as needed for spacing.

FLOOR MOUNT



Architectural Concepts

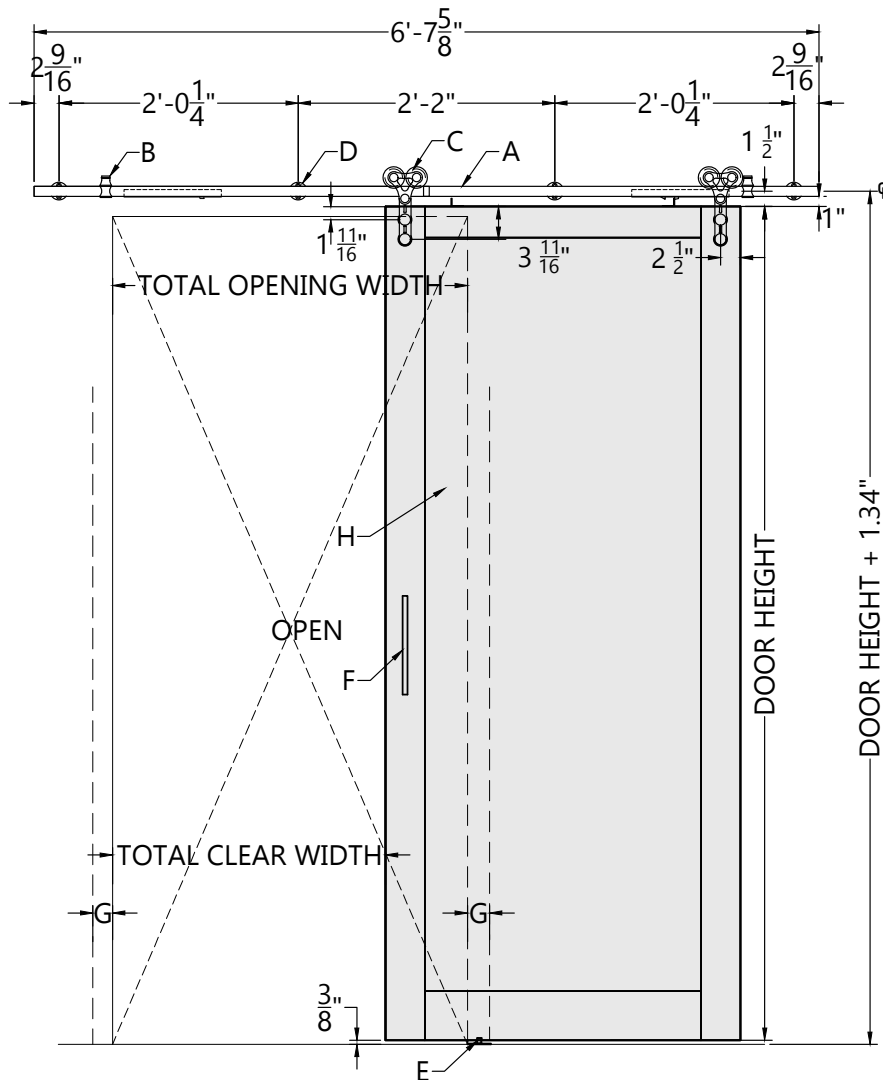
(888) 248 2724 | (720) 259 5364 | info@archconceptsllc.com | 18505 Longs Way, Parker, CO 80134 | archconceptsllc.com

<https://www.archconceptsllc.com/products/doors/hardware/sliding-barn-door/>

Page 3 of 5

Revised 06-10-22

BARN DOOR



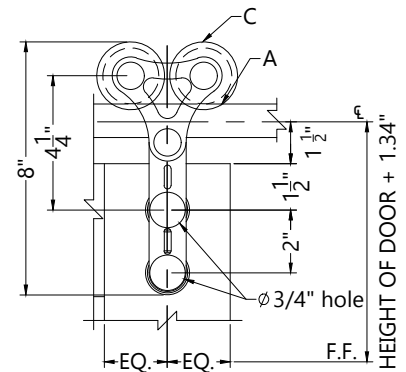
KEYNOTES:

- A. Stainless steel track
- B. Door stop
- C. Trolley hardware
- D. Track mount hardware
- E. Floor guide
- F. Pull handle
- G. 2" side of door overlap
at closed position
- H. 4" side of door overlap
at open position
- I. Shim
- J. Wood door

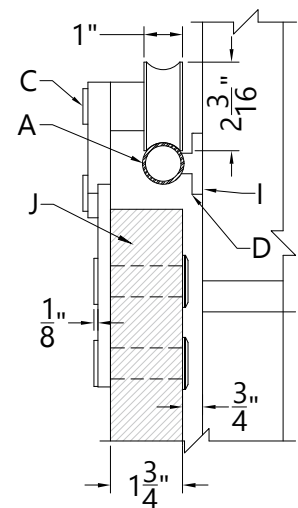
NOTES:

1. All measurements must be field verified by Architectural Concepts or by G.C.
2. Please follow care and handling instructions for doors and hardware.
3. AC will submit drawings for approval before ordering any material.
4. Layout and configuration can be customized to customer's need.
5. Shims are included in hardware package. Use as needed for spacing.

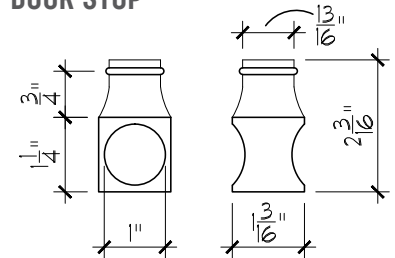
ELEVATION



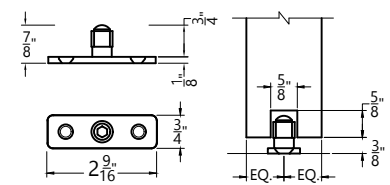
HANGER



DOOR STOP



FLOOR MOUNT



Architectural Concepts

(888) 248 2724 | (720) 259 5364 | info@archconceptsllc.com | 18505 Longs Way, Parker, CO 80134 | archconceptsllc.com

<https://www.archconceptsllc.com/products/doors/hardware/sliding-barn-door/>

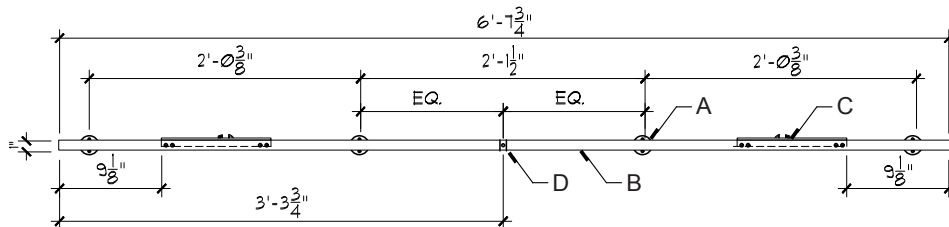
Page 4 of 5

Revised 06-10-22

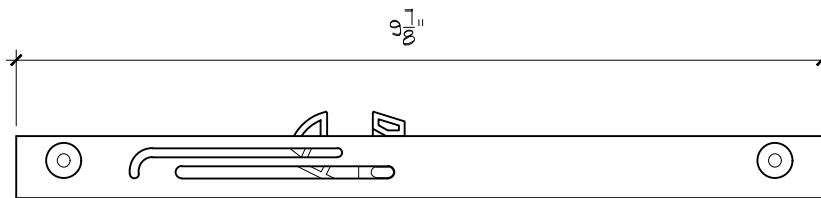
AC9000C

SOFT CLOSE

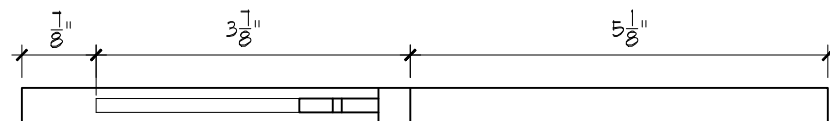
TRACK ELEVATION



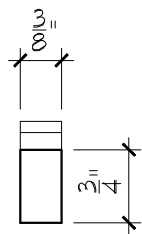
FRONT



TOP



SIDE



KEYNOTES:

- A. Track mount hardware, typ of 4
- B. Stainless steel track
- C. Soft close hardware, typ of 2
- D. Splice connection of track



Architectural Concepts

(888) 248 2724 | (720) 259 5364 | info@archconceptsllc.com | 18505 Longs Way, Parker, CO 80134 | archconceptsllc.com

<https://www.archconceptsllc.com/products/doors/hardware/sliding-barn-door/>

Page 5 of 5

Revised 06-10-22