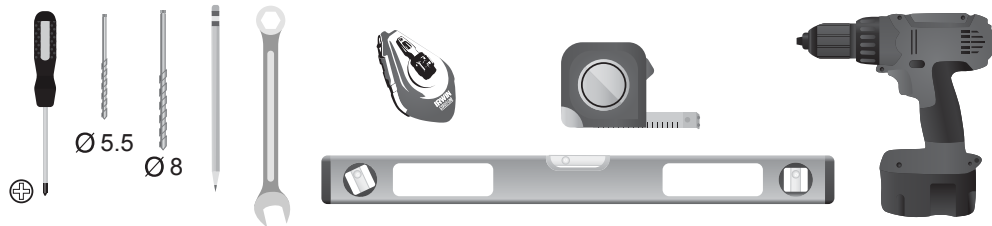


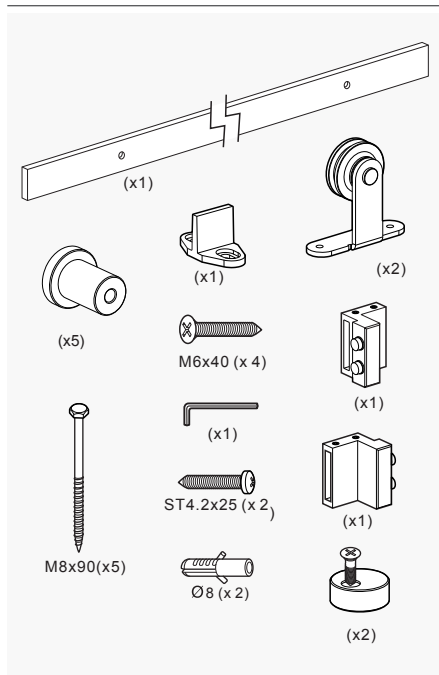


AC8000 SERIES BARN DOOR INSTALLATION

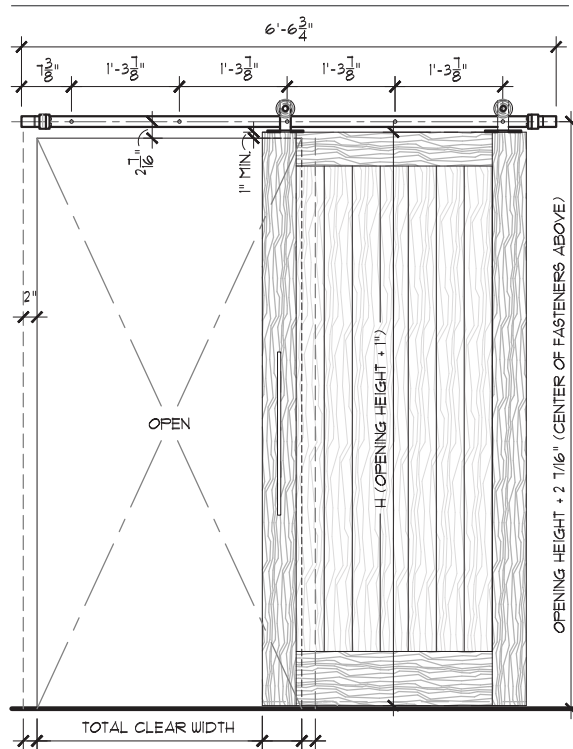
TOOLS REQUIRED



MATERIALS PROVIDED



DIMENSIONS



Architectural Concepts

O. 888.248.2724

D. 720.259.5364

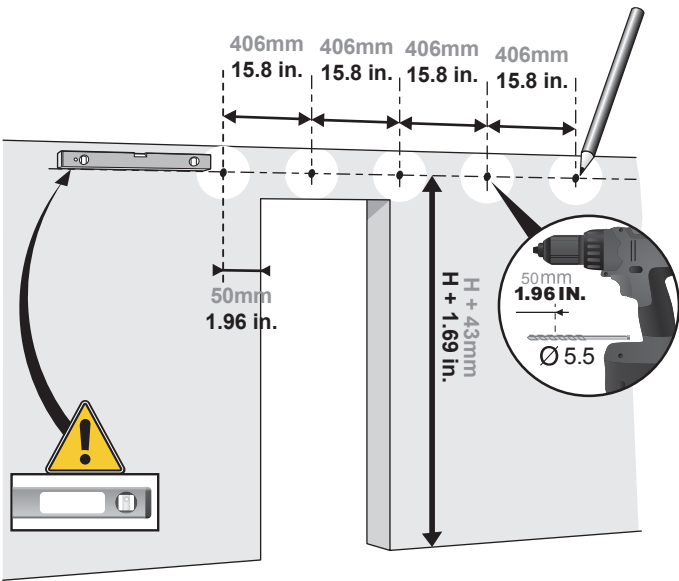
E. info@archconceptsllc.com

18499 Longs Way, Suite 102
Parker, CO 80134

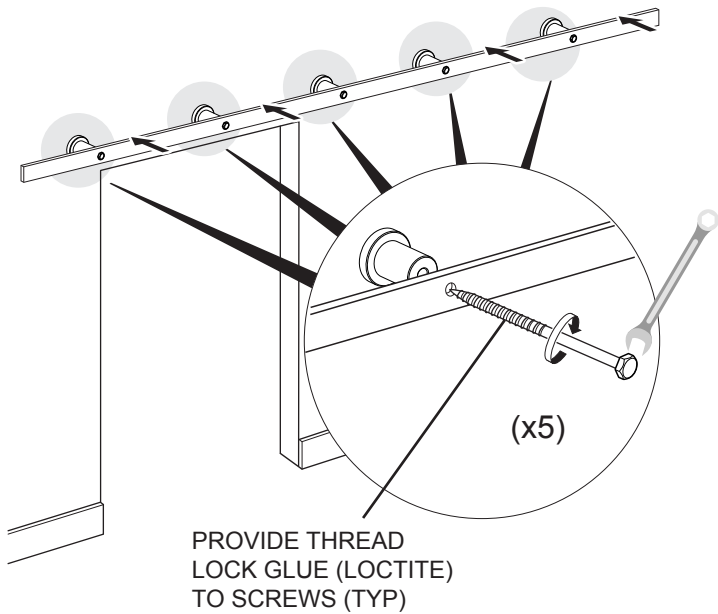
archconceptsllc.com

AC8000-A Barn Door Installation

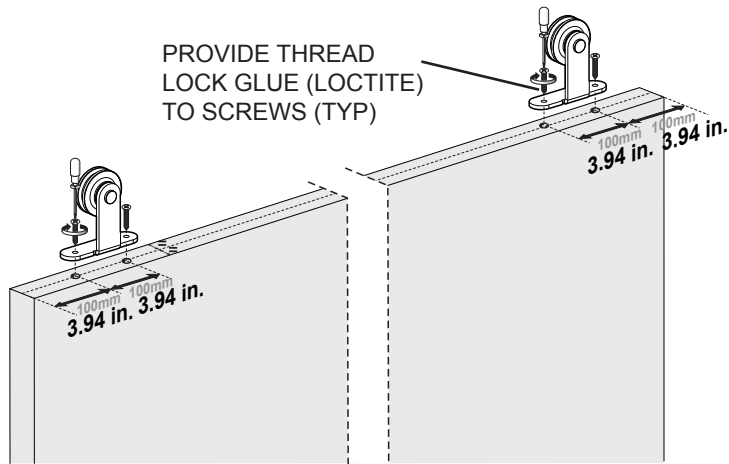
STEP 1



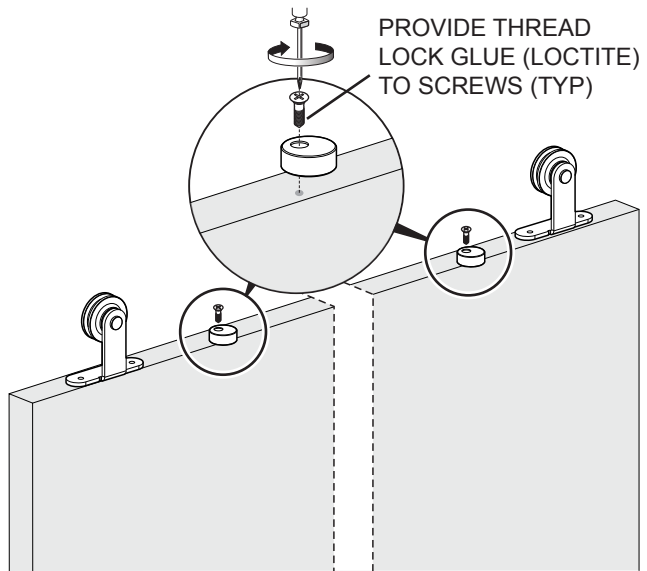
STEP 2



STEP 3



STEP 4



Architectural Concepts

888.248.2724 | 720.259.5364 | info@archconceptsllc.com | 18499 Longs Way, Suite 102, Parker, CO 80134 | archconceptsllc.com

<https://archconceptsllc.com/products/doors/hardware/sliding-barn-door/>

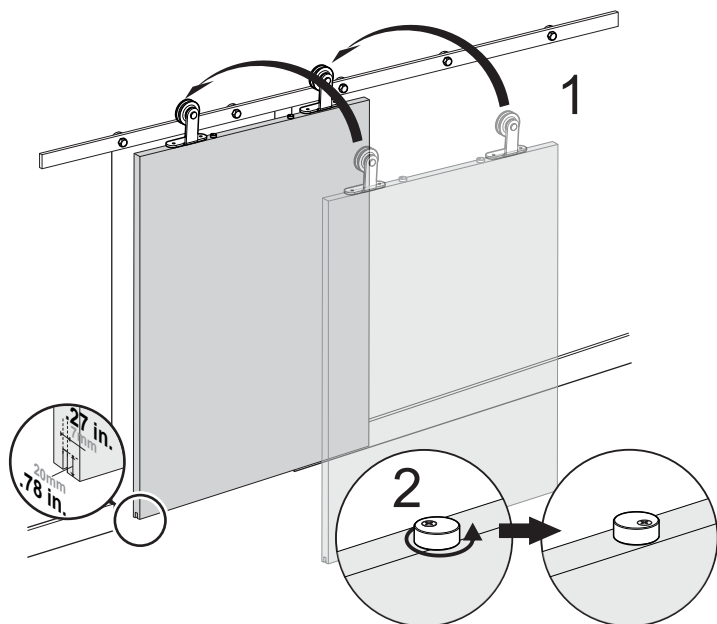
Page 2 of 3

Revised 11-09-18

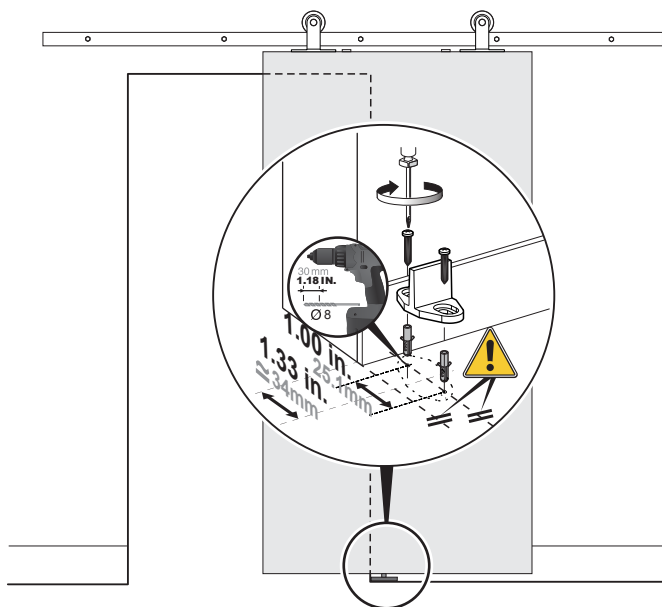
Some Graphics Provided by Vecteezy and Freepik

AC8000-A Barn Door Installation

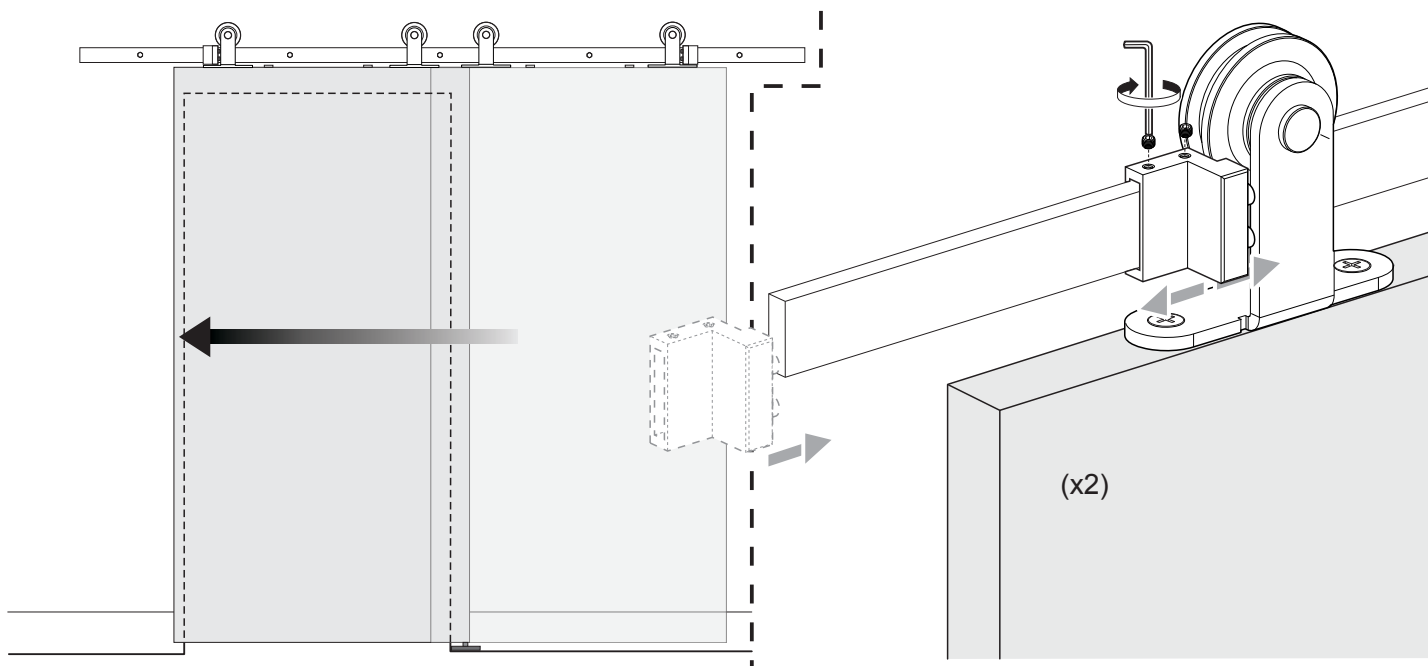
STEP 5



STEP 6



STEP 7



Architectural Concepts

888.248.2724 | 720.259.5364 | info@archconceptsllc.com | 18499 Longs Way, Suite 102, Parker, CO 80134 | archconceptsllc.com

<https://archconceptsllc.com/products/doors/hardware/sliding-barn-door/>

Page 3 of 3

Revised 11-09-18

Some Graphics Provided by Vecteezy and Freepik