



ACMHR60PC

PULL HARDWARE



SPECIFICATIONS

FINISHES

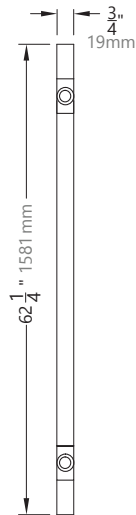
629 - Polished Stainless
630 - Satin Stainless

Custom colors available upon request

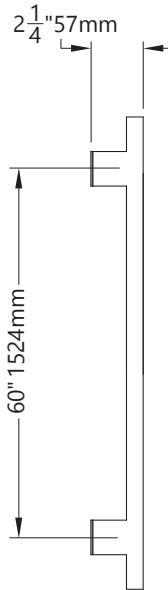
MODEL

ACMHR60PC

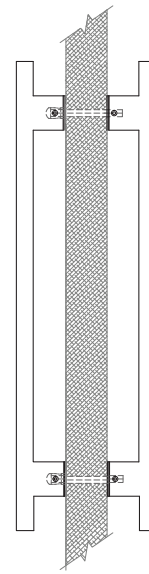
DIMENSIONS



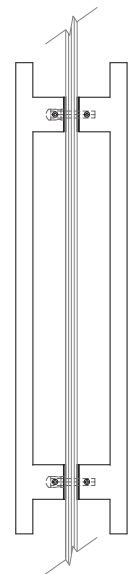
BACK



SIDE



DOOR SIDE



GLASS SIDE

**Architectural
Concepts**

O 888.248.2724
D 720.259.5358
E info@archconceptsllc.com

18505 Longs Way
Parker, CO 80134

archconceptsllc.com